

VISIT
Bolton

INSIDER'S HANDBOOK



CONTENTS

| | PAGE |
|--------------------------------|--------------|
| Welcome to Bolton | 4-5 |
| Town Highlights | 6-7 |
| Hollywood of the North | 8-9 |
| Theatres & Cinemas | 10-11 |
| Nightlife | 12 |
| Sport & Leisure | 13-14 |
| Family Attractions | 15-16 |
| Countryside, Parks & Gardens | 17 |
| Food & Drink | 18-21 |
| Shopping | 22-24 |
| Where to Stay | 25-26 |
| What's On | 27 |
| A Year of Ideas | 28-29 |
| Put Big Light On Festival | 30 |
| IRONMAN Weekend | 31 |
| Bolton Food and Drink Festival | 32 |
| Bolton Film Festival | 33 |
| Bolton Days Out | 34-37 |
| District Centres | 38 |
| Travel Information | 39 |
| Town Centre Map | 40-41 |
| Insider Tips | 42-43 |
| Plan Your Visit | 44 |



TURTON AND ENTWISTLE RESERVOIR



BOLTON TOWN HALL



BOLTON MUSEUM'S EGYPT GALLERY



QUEENS PARK



BOLTON MARKET FOOD HALL



BOLTON FOOD AND DRINK FESTIVAL

A place born to perform

Welcome to the Visit Bolton guide – your gateway to discovering everything this vibrant borough has to offer.

We've created this guide to help you explore Bolton's rich heritage, dynamic culture, beautiful outdoors, and thriving business community. Whether you're planning a day trip, a weekend stay, or simply looking for inspiration, this guide is designed to make it easy and enjoyable to experience the best of Bolton.

Our borough is experiencing a cultural and leisure renaissance, with Bolton proudly awarded Greater Manchester's Town of Culture 2024. Enjoy our lively theatre scene, from the acclaimed producing Octagon Theatre to the historic Albert Halls.

Visit Bolton Museum – a 2025 Tripadvisor Travellers' Choice Award winner – home to one of the UK's finest Egyptology collections and Greater Manchester's only free public aquarium.

Discover beautiful public spaces like Victoria Square and Queens Park, which host major national events such as the Bolton Food and Drink Festival and IRONMAN UK – drawing in hundreds of thousands of visitors annually. You can also explore our scenic reservoir and canal walks, peaceful country parks, and family-friendly farms.

Whatever your interests, Bolton welcomes you with heritage, countryside, and culture. There's truly something here for everyone.



Sue Johnson

Chief Executive
of Bolton Council

Bolton's vision

Bolton is proud to be building a vibrant and inclusive visitor economy that reflects the best of our borough. Our Visitor Economy Strategy, launched in 2024, sets out a bold ambition: to position Bolton as a must-visit destination – for day-trippers, weekend explorers, business travellers, and event-goers alike.

We're growing our offer across six key areas: diversifying town centres, securing major investment, expanding active and nature-based tourism, enhancing cultural events, developing visitor products and markets, and investing in supporting infrastructure. All of this is done in close partnership with local businesses and stakeholders through our newly established Local Visitor Economy Partnership Board.

The brilliant new **visitbolton.com** website plays a key role – promoting more than 300 local businesses and guiding over 150,000 users to Bolton's best places to stay, eat, shop, and explore.

This work is part of a wider vision: aligning with the Greater Manchester Visitor Economy Strategy to help our region become the most visited in the UK outside of London.

Together, we're working towards a 2040 vision for Bolton – a thriving, welcoming, and well-connected borough where people want to live, work, study, invest, and most of all, visit.



Lee Fallows

Chair of Bolton's
Local Visitor Economy
Partnership Board

A fantastic place to live, work, study, invest and visit.

TOWN HIGHLIGHTS

1 Countryside escapes

From the rugged beauty of the nearby moors to peaceful canal walks, Bolton offers nature on your doorstep.

2 Family-run gems

Independent cafés, shops and businesses give Bolton its warm, personal touch.

3 Cultural buzz

With theatres, festivals and film crews rolling in, Bolton's creative scene is thriving.

4 A shopper's delight

With high street favourites, quirky district independents, and a top-rated retail park, Bolton's shopping scene offers something for every taste and budget.

5 Location, location, location

Bolton's excellent transport links to Greater Manchester, Lancashire and the wider UK mean it's very easy to get to.

6 The people

Bolton is routinely listed among the friendliest places in the UK.

7 Green space galore

Made up of over 50% green space, Bolton offers excellent opportunities for visitors and locals alike – from parks and multi-use outdoor trails to fishing spots and moorlands.

8 Festival fever

From the Bolton Food and Drink Festival to IRONMAN UK and the Put Big Light On Festival, the town knows how to throw a party.

9 A Town of Culture

As Greater Manchester's Town of Culture 2024, Bolton celebrates its heritage, creativity, and community like never before.

10 Hollywood of the North

Bolton's stunning architecture and cinematic streets have made it a magnet for TV and film – but more on that on the next page.

MOSES GATE COUNTRY PARK



BOLTON FOOD AND DRINK FESTIVAL

Unique District Centres

Beyond the vibrant town centre, Bolton is made up of seven distinct townships - each with its own character, heritage, and visitor appeal. From the rural tranquility of **Turton (South)** and the industrial heritage of **Farnworth** and **Kearsley**, to the market town atmosphere of **Westhoughton** and the canal-side character of **Little Lever**, every corner of the borough has something to discover.

Horwich and **Blackrod**, nestled near the West Pennine Moors, invite outdoor enthusiasts with scenic trails and panoramic views. Together, these districts showcase the diversity of Bolton - local, authentic, and full of hidden gems waiting to be explored. For more info, see p38.



THE HOLLYWOOD OF THE NORTH



FILMING AT LE MANS CRESCENT

Bolton is born to perform

Bolton isn't just a producer's dream backdrop - it's a star in its own right, with plenty of character.

With its grand civic architecture, cobbled streets, and dramatic landscapes, Bolton has become a magnet for film and TV crews. From gritty dramas to glossy thrillers, the town's unique character has appeared in productions across BBC, ITV, Netflix, Paramount+ and Sky, earning it the nickname "Hollywood of the North".

Le Mans Crescent, with its sweeping curves and timeless grandeur, has doubled as Moscow, Manchester, London, and even fictional towns in hit series like:

- *Peaky Blinders* (BBC)
- *Happy Valley* (BBC)
- *It's a Sin* (Channel 4)
- *Fool Me Once* (Netflix)
- *A Gentleman in Moscow* (Paramount+)
- *Alma's Not Normal* (BBC)
- *Ridley* (ITV)
- *The Power of Parker* (BBC)

Even Sylvester Stallone filmed a Warburtons ad on the steps of Bolton Town Hall - a nod to *Rocky* that went viral; with stars like Robert De Niro having also featured in the Bolton bakery's ads.

Around 140 filming days across four years alone brought over £1 million into the local economy. And it's not just about the cameras - it's about the buzz. Crews, creatives, and curious fans flock to Bolton, adding energy to local cafés, shops and streets.



PEAKY BLINDERS SCENE AT LE MANS CRESCENT



ALMA'S NOT NORMAL SCENE AT QUEENS PARK

Want to walk in the footsteps of Thomas Shelby and travel back in time? Plan a trip to visit the iconic Le Mans Crescent with its neo-classical architecture and famous arches. You can also enjoy Bolton Film Festival which takes place early October every year.



THEATRES



PANTO AT ALBERT HALLS BOLTON

Albert Halls Bolton

Nestled in the heart of town within Bolton Town Hall, this iconic venue is renowned for hosting world-famous acts and a vibrant mix of comedy, music, drama, pantomimes, thought-provoking talks, and family shows.

Bolton Little Theatre (Town Centre)

Community-led with a rich history and known for high-quality amateur productions, it stages everything from compelling dramas to light-hearted comedies, often featuring local talent and emerging performers - and boasts patrons such as Sir Ian McKellen.

Farnworth Little Theatre

A volunteer-run gem presenting five full-length productions a year, celebrated for its intimate setting and welcoming atmosphere - treating audiences to a dynamic mix of drama, comedy, and thrillers.

Octagon Theatre (Town Centre)

Bringing a world-class producing theatre to the heart of Bolton, the Octagon stages gripping classics, joyful musicals, and boundary-pushing comedy; drawing diverse talent through standout events like the Bolton Comedy Festival.

The Victoria Hall (Town Centre)

Historic concert venue, hosting orchestras, choirs, pantomimes, and community events. Celebrated its 125th anniversary in 2025, marking over a century of cultural excellence and community spirit.

CINEMAS



THE LIGHT CINEMA

Cineworld (Astley Bridge)

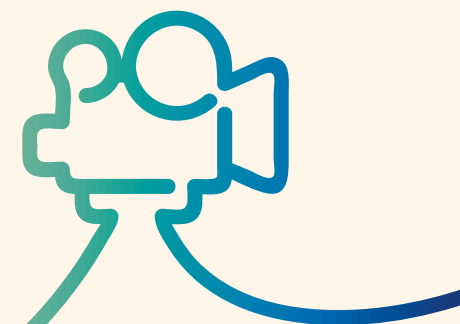
One of the largest screens in the North West, with 15 screens and free parking at The Valley. It offers a wide selection of films - from family favourites to the latest blockbusters - and features special deals like Movies for Juniors and Cineworld Unlimited for avid filmgoers.

The Light (Town Centre)

Host to Bolton Film Festival, this stylish nine-screen cinema sits in Market Place Shopping Centre, showing blockbusters, live events, and indie films. With a fully stocked bar, comfy seating, and inclusive screenings, it's a perfect spot for a relaxed movie night or a social outing.

Vue (Horwich)

12-screen cinema at Middlebrook Retail & Leisure Park with recliner seats and Dolby surround sound. Enjoy the latest blockbusters and special screenings in luxurious comfort, with free parking and easy access for families and groups.





NIGHTLIFE



YE OLDE MAN & SCYTHE

Hogarths (Town Centre)

Lavish Victorian gin palace with 140+ gins, microbrewery, live sports, music, and events. Grand interiors and beer gardens make it a Bolton favourite.

Northern Monkey Bar (Town Centre)

Vibrant microbar with home craft beers, guest brews, cocktails, pizzas, and live comedy - all in a relaxed, character-filled setting.

The Beer School (Westhoughton)

Award-winning, dog-friendly micro-pub with beer garden, known for its extensive and ever-changing selection of real ales, craft beers, and ciders from independent breweries.

The Crofters Bradshaw (South Turton)

Hosts live music, open mic and quiz nights with cocktail specials, and offers a relaxed bar, deck, and marquee.

The Crown (Horwich)

A landmark pub with a traditional yet stylish feel, serving cask ales and featuring live music, a pub quiz, and traditional pub games.

The Definitely Maybe Bar (Town Centre)

Oasis-themed cocktail bar with live music, neon vibes, darts, and top-tier pizza. Open late weekends - perfect for indie fans and casual nights out.

Ye Olde Man & Scythe (Town Centre)

One of Britain's oldest pubs, dating to 1251. Historic, haunted, and Grade II listed - a must-visit for ghost hunters and history lovers.

SPORT & LEISURE

Bolton Sailing Club (Belmont)

Enjoy year-round sailing with RYA training, competitive racing, and inclusive sessions in scenic countryside.

Cycling

Nestled next to the West Pennine Moors, discover miles of walking and cycle trails to enjoy across Bolton.

View the cycle map:

**Fishing**

Bolton boasts a range of fisheries including Bradshaw Hall and Gingham Fisheries, offering coarse and match fishing in peaceful settings.

Golfing

Scenic fairways, driving ranges, clubhouses, and lessons - Bolton offers relaxed golfing for all skill levels across stunning countryside courses.

Horseriding

Saddle up for countryside hacks, pony treks, riding lessons, and equestrian shows for all levels at welcoming local stables.



BOLTON SAILING CLUB

Leverhulme Park (Darcy Lever)

Bolton's largest park, offering athletics facilities, five-a-side football pitches, and a community centre.

Rugby

Join local rugby clubs, attend matches, or explore Rugby League World Cup legacy events hosted at Bolton Stadium.

Toughsheet Community Stadium (Horwich)

Bolton Wanderers' home, hosting football matches, world-famous concerts and events with fan-friendly features.





BOLTON LEISURE CENTRES



BOLTON ARENA

Whether you're looking to swim, lift, run, or relax, Bolton's leisure centres offer something for everyone. With modern facilities, friendly staff, and affordable fees and memberships, staying active has never been easier.

| LEISURE CENTRE | LOCATION |
|---|----------------------------|
| Bolton Arena | Arena Approach, Horwich |
| Farnworth Leisure Centre | Brackley Street, Farnworth |
| Horwich Leisure Centre | Victoria Road, Horwich |
| Leverhulme Park Community Leisure Centre | Long Lane, Bolton |
| Sir Jason Kenny Centre at Bolton One | Moor Lane, Bolton |
| Westhoughton Community Leisure Centre | Bolton Road, Westhoughton |

Free swimming for under-17s

Bolton residents under 17 can swim for free with a Junior Leisure Card. Just bring ID and a completed form (with a parent/guardian) to any centre with a swimming pool.

FAMILY ATTRACTIONS

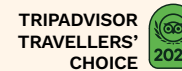
AirVault Inflatable & Trampoline Park (Westhoughton)

A high-energy indoor park featuring trampolines, inflatables, ninja walls, and a covered sports court - plus a mezzanine café and party packages for all ages.

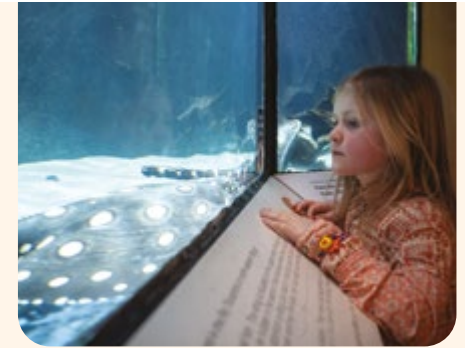
Amazonia (Town Centre)

Rainforest-themed indoor venue, featuring a vibrant 18-hole crazy golf course, jungle, and play frames for kids aged 0-14 - perfect for family fun.

Bolton Museum & Aquarium (Town Centre)



A cultural cornerstone featuring a world-class Egyptology collection, natural and local history exhibits, and Greater Manchester's only public aquarium. Interactive, educational, and free to enter - with a gift shop and café for a perfect family day out.



BOLTON MUSEUM & AQUARIUM

Bolton Steam Museum (Heaton)

Home to Europe's largest collection of working textile mill steam engines, lovingly restored by volunteers. Open every Wed & Sun (11am-3pm), with special "In Steam" days throughout the year when the full collection roars to life.

Hedgehogs Woodland Adventures (Horwich)

Offers forest school-inspired play in private woodland, with mud kitchens, campfire cooking, nature crafts, themed sessions, and holiday clubs - plus magical party packages from fairies to axe throwing.





FAMILY ATTRACTIONS



POPPYWOOD ALPACAS

Jump Xtreme & That Fun Place (Haulgh)

A high-energy indoor activity centre featuring wall-to-wall trampolines, dodgeball courts, slam dunk hoops, and a soft play zone with slides, ball pits, and climbing nets. It caters to all ages with sessions for tots, teens, and families - plus a café for parents to relax while the kids go wild.

Party and Play Funhouse (Westhoughton)

One of the largest indoor & outdoor play centres in Greater Manchester. Includes soft play zones, laser tag, and birthday party packages. Designed with both kids and parents in mind.

Poppywood Alpacas (Horwich)

A charming alpaca experience offering scenic walks, meet-and-greet sessions, and even alpaca therapy - perfect for families, nature lovers, and anyone seeking a relaxing countryside adventure.

Smithills Hall

A Grade I listed manor house with medieval, Tudor, and Victorian wings. Offers immersive history experiences, seasonal events like Halloween ghost tours, and peaceful gardens. A must-visit for heritage lovers and curious kids alike.

Smithills Open Farm

A working farm with over 25 types of animals, from llamas to lambs. Features tractor rides, petting zones, and homemade ice cream. Great for younger children and families looking for hands-on fun.

COUNTRYSIDE, PARKS & GARDENS

Doffcocker Lodge

A tranquil nature reserve, offering scenic walks, rich birdlife, and a peaceful escape around a historic mill reservoir.

Jumbles Country Park (South Turton)

Scenic reservoir walks, birdwatching, and a cosy café. Great for families and dog walkers.

Moses Gate Country Park (Farnworth)

Tranquil nature reserve with lakes, riverside walks, waterfowl, woodland trails, and a modern playground.

Moss Bank Park

A family-friendly park with play areas, tennis courts, a miniature railway, and The Hive nature play zone.

Queens Park (near to Town Centre)

Award-winning oasis, proudly holding Green Flag status - with restored Victorian charm, vibrant wildlife, and a peaceful duck pond.



TURTON AND ENTWISTLE RESERVOIR

Seven Acres Country Park (Tonge Fold)

A 79-acre nature reserve bursting with wildflower meadows, woodland trails, and over 100 bird species.

Smithills Country Park

Offers over 2,000 acres of scenic woodland, rolling hills, and wildlife-rich trails, with historic Smithills Hall at its heart - ideal for walking, picnicking, and exploring Bolton's natural and cultural heritage.

Turton and Entwistle Reservoir

Scenic woodland reservoir with a popular circular walking trail, located near Turton Tower - a 600-year-old Grade I listed Tudor manor house.



CAFÉS & DELIS



CAFÉ CRESCENT

Café Crescent (Town Centre)

Nestled inside Bolton Central Library, it offers artisan coffee, homemade cakes, and locally sourced lunches in a bright, welcoming space perfect for relaxing or refuelling.

Earl's (Heaton)

Trendy deli serving artisan sandwiches, brunch plates, and fresh coffee in a relaxed setting. Great for daytime bites or evening chill-outs.

Jing Jai Thai Café (Town Centre)

Family-run, inspired by Chiang Mai traditions, serving handmade starters, fragrant curries, and bold stir-fries - alongside Thai sweet bakes and teas.

Lottie's of Belmont

Charming countryside café offering homemade cakes, hearty brunches, scenic views, and warm, friendly service.

Miss Lemon Café (Kearsley)

Cosy café serving breakfast, brunch, lunch, desserts, and coffee in a family-friendly atmosphere.

Odessa (Town Centre)

Offers hearty breakfasts, homemade cakes, and friendly service. A local favourite for casual dining.

Thyme Deli (Horwich)

Rustic charm meets gourmet flair – serving fresh deli fare, salads, and artisan treats.

Discover lots more places on our website, where you can build your own itinerary!



COFFEE SHOPS & BAKERIES

Armstrongs Bakers (Great Lever)

Family-run for over 50 years, this beloved bakery is known for handmade pies, cakes, pasties, and fresh bread.

Brewed Coffee (Horwich)

Fresh coffee, teas, milkshakes, and light meals in a relaxed setting with dine-in, takeaway, and an upstairs lounge for private events.

Bridge Coffee (Haulgh)

A hidden gem with top-tier espresso, homemade bakes, and a peaceful atmosphere. Ideal for a quiet recharge.

Burnden Park Pie Shop

Known for hearty meat pies, pasties, and sausage rolls - served fresh daily. A local favourite with roots in tradition, famously endorsed by Fred Dibnah.

Carrs Pasties

Family-run bakery since 1938, famous for freshly baked pasties, sandwiches, and cakes. With multiple Bolton locations and nationwide delivery.



YE OLDE PASTIE SHOPPE

The Coffee House (Farnworth and Town Centre)

Modern coffee shop with a wide selection of brews, light bites, and comfy seating. Great for meetups or solo sips.

Wilson's Pie Shop (Kearsley)

Classic Bolton pie shop serving satisfying meat and potato pies, pasties, and baked goods. A go-to for traditional flavours.

Ye Olde Pastie Shoppe (Town Centre)

Established in 1667 and still family-run, this historic bakery serves handmade pasties praised by celebrities and locals alike.

RESTAURANTS



CURLEY'S DINING ROOMS

Casa Nostra (Westhoughton)

Authentic Italian bar-restaurant offering cocktails, warm hospitality, and weekend buzz with a loyal local following.

Curley's Dining Rooms (Horwich)

Family-run and dog-friendly, it offers hearty breakfasts, homemade dishes, and outdoor seating with its fishing lakeside views.

Nick's Restaurant (South Turton)

Creative seasonal British-Mediterranean dishes served with warm hospitality and a relaxed, inviting vibe.

Olympus (Town Centre)

Award-winning fish and chip restaurant with elegant interiors, live piano, and seating for 200. Serves British classics, pre-theatre meals, and hosts private events.

Royal Balti House (Farnworth)

Award-winning Indian restaurant and Bolton's oldest curry house, serving signature dishes with cocktails in a lively setting.

Tapaz Restaurant & Bar (Town Centre)

Family-friendly Mediterranean spot serving paella, grilled meats, and tapas in a relaxed setting.

The Cherry Tree (Blackrod)

Award-winning - known for seasonal menus, locally sourced ingredients, and a warm, welcoming atmosphere.

COUNTRY PUBS & ARTISAN MARKETS

Black Dog Inn (Belmont)

Rustic 1825 farmhouse-turned-pub with open fires, scenic views, and a cosy stop for hikers and cyclists.

Bob's Smithy Inn (Horwich)

Traditional retreat with open fires, cask ales, and a warm welcome in a timeless rural setting.

Bolton Artisan Market (Heaton)

Monthly market at Heaton Fold Garden Centre: handmade food, crafts, and gifts from local makers.

Bolton Market Food Hall (Town Centre)

Modern dining space within Bolton Market, featuring global street food, a gin bar, live music, and indoor-outdoor seating.

Provenance Food Hall (Westhoughton)

Offering artisan produce with a premium butcher, deli, bakery, and upstairs restaurant.



BOLTON MARKET FOOD HALL

The Blundell Arms (Horwich)

Classic country pub with seasonal dishes, beer garden, and a welcoming vibe near historic Holy Trinity Church.

The Strawbury Duck (South Turton)

Traditional pub nestled by reservoirs and hills, known for cask ales, hearty food, and a warm, beamed interior.

The Wilton Arms (Belmont)

Welcoming country pub on the moors with refined dining, traditional British dishes, and scenic surroundings.

DON'T MISS OUR ANNUAL, MULTI-AWARD-WINNING
BOLTON FOOD AND DRINK FESTIVAL

EVERY AUGUST BANK HOLIDAY WEEKEND
IN THE TOWN CENTRE!

MORE
INFO ON
p32!

SHOPPING & RETAIL PARKS



MIDDLEBROOK RETAIL & LEISURE PARK

Bolton's District Centres

Offering a rich mix of local character and vibrant retail experiences - from Westhoughton and Farnworth's bustling high streets to South Turton's picturesque Last Drop Village - with independent shops, cosy cafés, and artisan boutiques in charming settings.

Bolton Market (Town Centre)

Award-winning traditional market in the North West, offering fresh produce, global street food, flowers, fashion, and more. Its vibrant new food hall features international cuisines, a gin bar, and live music - making it a destination for both shopping and dining.

Market Place (Town Centre)

Historic converted market hall featuring high street brands, The Light cinema, and The Vaults - a restored Victorian basement with diverse restaurants, mini golf, and an arcade. Hosting regular events like artisan markets, comic cons, and Bolton Film Festival at The Light.

Middlebrook Retail & Leisure Park (Horwich)

The UK's largest retail park, packed with everything from big-name fashion and tech to homeware, toys, and everyday essentials. Enjoy Vue cinema, Hollywood Bowl, and a terrace of restaurants for every taste - all beside Bolton Wanderers' stadium. A full day out with shopping, dining, and leisure in one place.

FARM SHOPS & BUTCHERS

Atkinsons Butchers (South Turton)

Traditional butcher and meat wholesaler known for lamb, English cuts, and custom orders. Friendly service with loyal local following.

Barrons of Beef (Smithills)

Family-run since 1978, praised for salt and pepper chicken, weekly meat packs, and friendly, personalised service.

Benthams Butchers at Ryders (Kearsley)

Homemade pies, soups, cakes, and meals, plus a master butcher and ice cream parlour. Known for top-quality meats sourced locally from Lancashire farms.

Frasers Butchers Ltd (Great Lever)

Award-winning Q Guild butcher, known for premium meats, homemade sausages, and BBQ packs. Proudly sources from local farms and offers expert service.



MILK MAIDS

Fresh Farm Shop (Belmont)

Family-run farm shop offering locally sourced meats, organic vegetables, dairy, cakes, spices, and artisan goods.

Milk Maids (Over Hulton)

Beloved for fresh milk, eggs, preserves, and ice cream. Includes a small farm with animals - perfect for families and food lovers.

Smithills Farm Shop

Part of Smithills Open Farm, this shop offers fresh local produce, homemade pies, jams, and baked goods - plus farm-reared meats and dairy. A great stop for quality ingredients and a family day out.

GARDEN CENTRES



HEATON FOLD GARDEN CENTRE

Arthur Lane Nurseries (Ainsworth)

A family-run garden centre with over 35 years of expertise. Offers homegrown plants, garden furniture, and a charming tea room.

Bolton Garden Centre (Deane)

Part of British Garden Centres, this large site offers plants, homeware, a soft play area, and the Gardener's Retreat restaurant with carvery.

Bradley Fold Garden Centre (Little Lever)

Popular family-run centre offering plants, garden furniture, gifts, and pet supplies. Features a stylish café serving homemade meals and cakes, plus seasonal events and homeware shopping.

Heaton Fold Garden Centre (Heaton)

A community-focused garden centre offering plants, gardenware, gifts, and a café. It hosts monthly artisan markets and provides work experience for adults with disabilities, making it both a shopping destination and a social enterprise.

HOTELS, GUEST HOUSES & B&Bs



LAST DROP VILLAGE HOTEL & SPA

Black Dog Inn (Belmont)

Traditional inn with garden, pub, and dog-friendly rooms. A cosy base for exploring Bolton's countryside and walking trails.

Highgrove Guest House (Town Centre)

A casual, centrally located guesthouse offering simple, traditionally furnished rooms with free Wi-Fi and parking.

Holiday Inn Bolton Centre (Town Centre)

Town-centre hotel with spacious rooms, event spaces, and good motorway links. Family-friendly and ideal for weddings or group stays.

Last Drop Village Hotel & Spa (South Turton)

Set in converted 17th-century farmhouses with luxury spa, pool, and village-style shops. Dog-friendly and perfect for romantic or family getaways, with a variety of events hosted throughout the year.

Meadowcroft Farm Barn (Edgworth)

Nestled in the picturesque village of Edgworth, this award-winning B&B offers luxury accommodation in a beautifully converted barn. With super king bedrooms, en-suite wet rooms, and a cosy log-burning stove, it's a peaceful rural retreat just minutes from Bolton's scenic countryside.

Mercure Bolton Georgian House Hotel (Blackrod)

Relaxing hotel near the West Pennine Moors with a gym, restaurant, and dog-friendly rooms. Popular for families and countryside escapes.

HOTELS, GUEST HOUSES & B&Bs



THE BOLTON STADIUM HOTEL

Quarlton Fold Farm (Edgworth)

Set in the rolling hills near Turton, this peaceful B&B offers rustic charm with modern comforts. Guests love the panoramic views, hearty breakfasts, and easy access to walking trails and reservoirs.

The Bolton Stadium Hotel (Horwich)

Modern hotel at Toughsheet Community Stadium with pitch-view rooms, free parking, and family-friendly dining. Great for sports fans and event-goers.

The Strawbury Duck (South Turton)

Rustic B&B near Entwistle Reservoir with hearty breakfasts and dog-friendly rooms. Great for walkers and nature lovers.

Wendover Guest House (Horwich)

Highly rated B&B near BWFC Stadium with spotless rooms, exceptional breakfasts, and a warm welcome. Family-friendly and peaceful.

What's On

Bolton is the place to be - from monthly artisan markets and foodie weekends, to concerts, scenic walks, theatre productions and family-friendly festivals. Whatever the time of year, there are always good reasons to get out and explore.

In this section, you'll find:

- **A Year of Ideas:** Key events and ideas to help you plan - covering all seasons throughout the year.
- **Highlights you shouldn't miss:** The town's headline festivals and famous events, helping you plan out your year ahead.

IRONKIDS/IRONMAN UK
- EVERY JUNEBOLTON FOOD AND DRINK
FESTIVAL - EVERY AUGUST

Whether you want to **discover something local** or plan your visit **around a big event**, this guide has you covered.



A YEAR OF IDEAS

NEW YEAR

SUMMER

WINTER

Take up a new hobby - explore our museums and libraries offering workshops and socials

Enjoy Easter events and entertainment - from trails and crafts to family shows and pantos

Take up a new outdoor sport like cycling or sailing, or simply spectate

Catch a Halloween show or book a spooky ghost tour at one of Bolton's haunts



Get active at one of our many gyms and leisure centres



Stroll through Bolton's parks and spot Blossom trees and spring wildlife



Festival season begins! Look out for Bolton Pride in May, IRONMAN UK in June, and Bolton Food and Drink Festival in August



Go pumpkin picking at one of our farms, and take a crunchy-leaf trail



Bolton's festive panto season begins!

Visit Santa's Grottos, and see one of his live shows!

SPRING

AUTUMN



Search our directory, discover what's on, and find places

to stay - then build your itinerary for the perfect trip!





BOREALIS BY DAN ACHER

Thursday 20 – Sunday 23 November 2025

Bolton's much-loved FREE light art festival returns this November, transforming the town centre into a glowing canvas of creativity and wonder.

Explore a stunning light trail featuring world-class installations like **Dan Acher's Borealis** in Victoria Square – an immersive Northern Lights experience – and **Luke Jerram's Mars** at Bolton Central Library.

Curated by Things That Go On Things, expect dazzling light displays and family street entertainment popping up across the town centre!

f Put Big Light On Festival
@ PutBigLightOnBolton



BEACON OF HOPE BY CRAIG MORRISON



NIGHT RUN
 BOLTON UK Presented by IRONMAN

IRONKIDS.

IRONMAN
 70.3 BOLTON ENGLAND



Friday 5 – Sunday 7 June 2026

Don't miss Bolton's legendary IRONMAN weekend!

Bolton will host another bumper weekend of sporting action in June when our three **IRONMAN** events return.

As many as 10,000 people are expected to take part from Friday 5 to Sunday 7 June.

Every year, thousands more turn out to cheer them on, creating the party atmosphere Bolton is famous for.

Kicking off the action on Friday 5 June is Night Run Bolton UK, where runners of all ages and abilities take on a 5k or 10k route through the town centre.

f IRONMAN England
@ IRONMAN_UK



On Saturday 6 June, up to 6,000 children and young people will take over the town centre for the world's biggest IRONKIDS.

Keeping the whole family entertained before and after the event will be crafts, face painting, and a climbing wall at the Family Fun Zone.

Then on Sunday 7 June, IRONMAN 70.3 Bolton takes centre stage, welcoming athletes from around the world for a thrilling triathlon challenge. Spectators line nearby parks and gather in the town centre to cheer them on in an unforgettable day of endurance and community spirit.





Bolton Food & Drink Festival

BOLTON FOOD AND DRINK FESTIVAL

Friday 28 – Monday 31 August 2026

Join us for the 21st edition of the UK's biggest and boldest food celebration! After over 20 years of flavour, fun, and family memories, the 2026 festival promises even more culinary magic, music, and mouthwatering moments.

Highlights:

- Celebrity & regional chef demos
- Artisan traders offering global cuisine and handmade gifts
- Live music & street entertainment
- Free children's activities
- Special dining events
- And of course, all the delicious food you can eat!

f Bolton Food and Drink Festival

@ BoltonFoodFest

X BoltonFoodFest

boltonfoodanddrinkfestival.com



MOST-LOVED LIVE EVENT 2023



BEST MARKET ATTRACTION 2024



LEADING LIVE EVENT 2022 & 2024



BOLTON FILM FESTIVAL

October 2026 (dates TBC)



BOLTON-BORN COMEDIAN, DIANE MORGAN

Bolton International Film Festival is the largest short film festival in the North West of England and ranks among the UK's leading festivals of its kind.

As a BAFTA and BIFA-qualifying event, it champions excellence in short-form storytelling.

Each October, the festival welcomes a dynamic and diverse audience of filmmakers, students, industry professionals and the wider public - to celebrate bold, original voices in cinema.

Attendees can discover outstanding new work from some of the world's most exciting emerging filmmakers, take part in Q&As, and engage with an industry programme featuring respected figures from across film and television.

Dedicated to nurturing fresh talent and spotlighting evolving voices, the festival acts as a powerful platform for short films and their creators.

Hosted at The Light Cinema in Market Place, audiences can enjoy a wide range of entertaining film genres.

f Bolton Film Festival

@ BoltonFilmFest

X BoltonFilmFest

boltonfilmfestival.com



BOLTON DAYS OUT

Whether you've got a full day to explore or just a few hours to spare, Bolton offers plenty to discover - from cultural gems and green spaces to family fun and local flavours. Here are some ideas!

Don't forget,
you can build your
own itinerary on
our website!



QUEENS PARK

FULL DAY



EGYPTOLOGY AT BOLTON MUSEUM

Morning

- Begin your day with a relaxed breakfast in the town centre - there are plenty of welcoming cafés to choose from.
- Head to **Bolton Museum** to explore Egyptology, natural history, art, and local heritage; then ponder at the aquatic creatures at the only free public aquarium in Greater Manchester.
- Wander through the filming hotspot **Le Mans Crescent** and admire the town's grand civic architecture. Maybe even pretend you're a Peaky Blinder while you're at it!



LE MANS CRESCENT

Afternoon

- Grab lunch in one of our quaint town districts - opt for independent eateries and niche cafés with character.
- For nature lovers, visit **Smithills Open Farm** for hands-on fun with animals, or enjoy a peaceful stroll through **Queens Park**, perfect for duck-feeding and quiet moments. Venture a little further to explore calming countryside trails nearby reservoirs and hills with panoramic views.

Evening

- Dine at one of Bolton's many restaurants or traditional pubs - perfect for hearty meals and a relaxed atmosphere. If timing's right, enjoy a show at **Albert Halls** or **Farnworth Little Theatre**.
- End the day with a drink at a cosy country-style pub. Whether it's South Turton, Blackrod, or Horwich, Bolton offers plenty of rural and peaceful settings.

BOLTON DAYS OUT

Stuck for time? No problem, we got you!
Here's some ideas you can explore in just half a day.



TIP:
Most attractions are walkable from the town centre or easily reached by bike or public transport.

HALF A DAY

Retail & Treats

- Grab a hot drink and browse the stalls at **Bolton Market** - shop fresh produce, global street food, and local crafts, or stroll through the town centre for retail therapy.
- Treat yourself to a true Bolton delicacy - a pasty barm from one of our famous family-run pasty shops.



BOLTON MARKET

Nature & Relaxation

- Take a refreshing walk at **Jumbles Country Park** or **Moses Gate Country Park**, both offering scenic trails and tranquil spots.
- Wrap up with lunch at a countryside pub or a laid-back café nearby. Or bring a picnic hamper to a country park or nature trail and take in the views.



MOSES GATE COUNTRY PARK

Culture & Heritage

- Visit **Westhoughton Library** to learn about the town district's rich past from the great work Westhoughton Local History Group do. Explore its heritage through old maps, historic photos, displays, and listed churches.
- Visit the **Fred Dibnah statue** in the town centre, near the steam engine display. Unveiled in 2008, it features his trademark flat cap and waistcoat, honouring Bolton's beloved steeplejack and working-class heritage.

- Hop on a bus or drive to **Smithills Hall** and step back in time. This beautifully preserved manor features Tudor and Victorian rooms, a chapel, and Great Hall. Set within **Smithills Country Park**, it's surrounded by peaceful gardens and scenic nature trails. Don't miss the charming Bake & Roast tearoom.



SMITHILLS HALL

Explore the character and charm of Bolton's surrounding townships - each with its own identity, heritage, and visitor appeal.

| TOWNSHIP | WHAT IT'S KNOWN FOR | WHY VISIT? |
|-----------------------|--|---|
| Turton (South) | Historic villages and moorland landscapes | Green spaces like Longsight Park (Green Flag status), Egerton Park, and scenic drives |
| Blackrod | Rural charm and elevated views | Ideal for hikers and countryside lovers |
| Horwich | Gateway to Rivington and the West Pennine Moors | Outdoor adventures, heritage trails, and cafés |
| Westhoughton | Former mill town with a proud industrial past | Independent shops, local eateries, and green spaces |
| Kearsley | A mix of countryside charm, village life and cultural heritage | Historic churches, heritage sites, and pretty canal-side walks, with friendly local pubs and eateries |
| Little Lever | Close-knit community and family-friendly vibe | Tranquil scenery and canal-side walks |
| Farnworth | Historic market town with strong community roots and regeneration underway | Shopping, local culture, and home to Bolton's largest nature reserve, Moses Gate Country Park |

The town's ideal location enables excellent connectivity to the north and south of England.

By Bus

Thanks to the Greater Manchester Bee Network and our state-of-the-art Bolton Interchange (which also has a cycle hub), getting around couldn't be easier. You can hop on frequent buses with £2 single fares!

By Bike

Bolton is well-connected by regional cycle routes, making it easy to reach by bike. Secure parking is available at key spots like Bolton Interchange.

By Train

Direct services from Manchester can take as little as 15 minutes. From major cities across the UK - including London - you can reach us via seamless connections through Manchester and other regions.

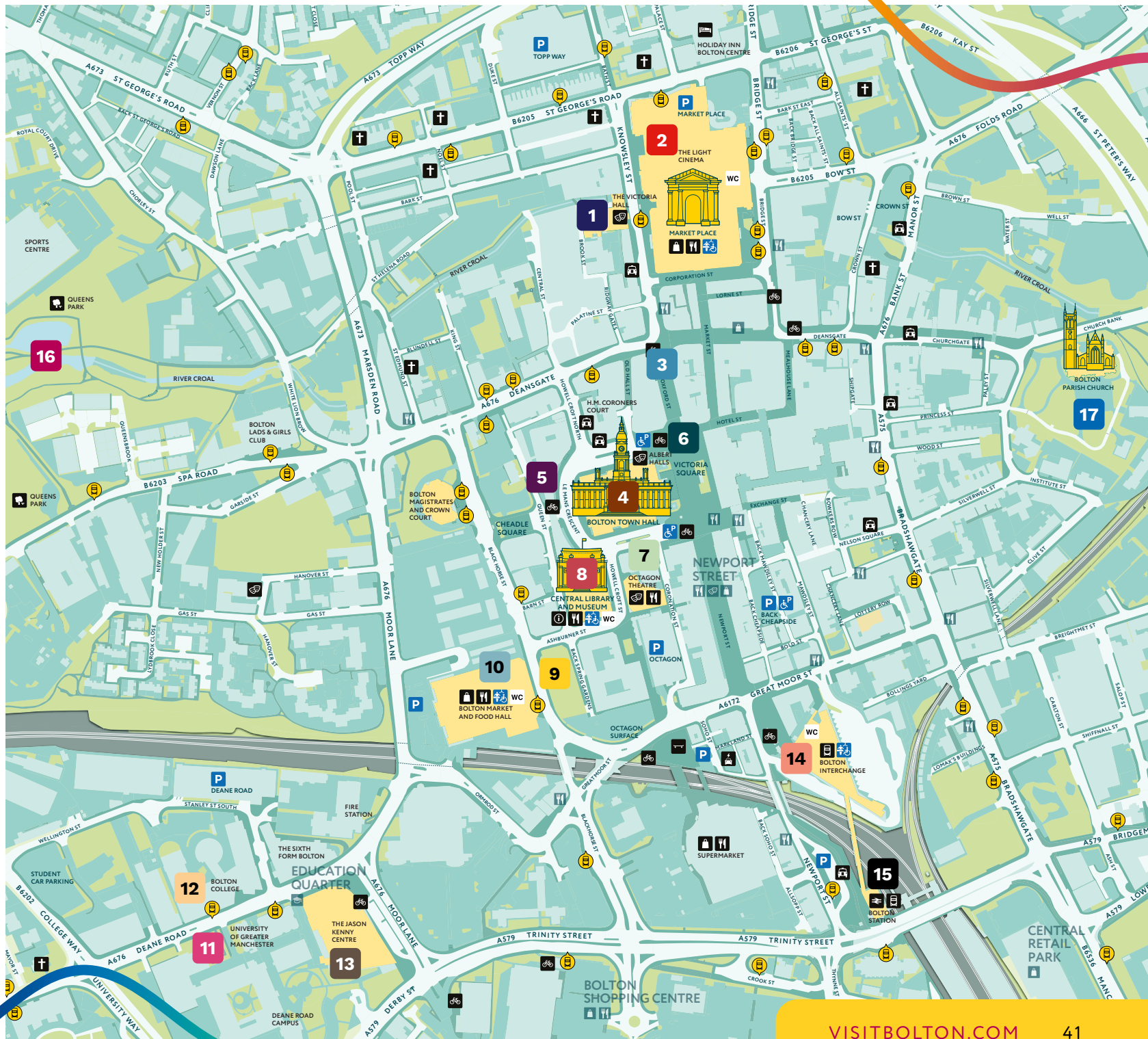
By Car

Situated in an ideal location, Bolton allows easy access to M60, M61 and M62. Parking is a breeze, with plenty of NCP car parks and on-street parking.



TOWN CENTRE MAP

- 1** The Victoria Hall
- 2** Market Place/
The Light Cinema
Host of Bolton Film Festival
- 3** Fred Dibnah statue
& steam engine display
- 4** Albert Halls/Town Hall
- 5** Le Mans Crescent
Popular filming location
- 6** Victoria Square
Host of Bolton Food
and Drink Festival
& Put Big Light On Festival
- 7** Octagon Theatre
- 8** Bolton Library
and Museum
- 9** Elizabeth Park
- 10** Bolton Market
and Food Hall
- 11** University of
Greater Manchester
- 12** Bolton College
- 13** Sir Jason Kenny Centre
- 14** Bolton Interchange
- 15** Bolton Train Station
- 16** Queens Park
Green Flag status
- 17** Bolton Parish Church



Discover Bolton like a local...

LOCAL LINGO & SAYINGS

- “**Barm**” = soft, round bit of bread used for making butties
- “**Mitherin**” = pestering or fussing
- “**Skriking**” = crying
- “**Ya’reet/Y’alreet?**” = you alright?
- “**Put wood in th’ole/Were you born in a barn?**” = shut the door
- “**Gerrit down yer neck**” = eat or drink it quickly
- “**It’s like Blackpool illuminations in here!**” = too many lights on

Must-Try Eats

Ye Olde Pastie Shoppe

(est. 1667) is a Bolton institution

Pasty barm – a carb-loaded local legend



Ice cream wafer sandwich invented in Bolton

FAMOUS FACES

Sir Ian McKellen

(Gandalf) – Bolton School alum

Peter Kay, Paddy McGuinness, Diane Morgan, Vernon Kay, Sara Cox – comedy and radio royalty

Sir Jason Kenny –

Famous cyclist who became Britain’s most decorated Olympian

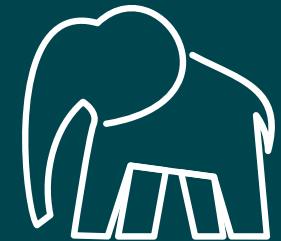
BOLTON’S COAT OF ARMS



Bolton’s motto, “**Supera Moras**”, first introduced in the 1890 arms, translates as “**Overcome Delays**” but is also a ‘dog Latin’ pun on Bolton being “**on the moors**”

Bolton’s elephant emblem is everywhere - from town hall carvings to statues

Theories link it to trade with India and the Diocese of Mercia, as well as the adaptation of the Elephant and Castle from the Arms of Coventry to symbolise strength and dignity



BARROW BRIDGE VILLAGE

BARROW BRIDGE VILLAGE

A picturesque former mill village nestled in a wooded valley in Smithills Estate, with stone cottages, charming paths, and a tranquil escape in the north of Bolton.

PLAN YOUR VISIT

EXPLORE MORE AT [VISITBOLTON.COM](https://www.visitbolton.com)

Planning your visit is easy:

- Browse places to go, things to do, and upcoming events
- Click “Add to itinerary” on anything that catches your eye
- Tap the ♥ heart icon at the top of the site to view your itinerary
- Share your plans with friends and family - perfect for group trips or solo adventures

Want to feature?

Submit your listings and events on our website via the links at the bottom.

Stay connected:

Follow us on social media for #WhatsOnBolton, hidden gems, and local tips:

 [Visit Bolton](https://www.facebook.com/VisitBolton)

 [Visit_Bolton](https://www.instagram.com/Visit_Bolton)

 [VisitBolton](https://twitter.com/VisitBolton)

 [Visit_Bolton](https://www.tiktok.com/@Visit_Bolton)

Tag us in your adventures and use:

[#VisitBolton](https://twitter.com/hashtag/VisitBolton)

[#BoltonDaysOut](https://twitter.com/hashtag/BoltonDaysOut)

[#HollywoodOfTheNorth](https://twitter.com/hashtag/HollywoodOfTheNorth)

VISIT
Bolton

[VISITBOLTON.COM](https://www.visitbolton.com)